

art. 0740

giunto compensatore

expansion joint

compensateur

Kompensator

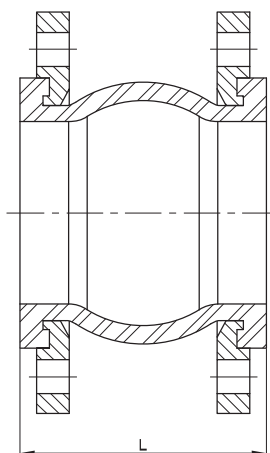
compensador



Condizioni di esercizio

Work conditions

	DN 32 ÷ 300
Max pressione operativa (positiva) Max working pressure (positive)	16 bar 230 PSI
Max pressione operativa (negativa) Max working pressure (negative)	750 mmHg 29,5" Hg
Pressione di scoppio Bursting pressure	48 bar 700 PSI



DN x L	SPOSTAMENTO ASSIALE Axial displacement (mm)		SPOSTAMENTO LATERALE Lateral displacement (mm)	ANGOLO DI DEFLESSIONE Angle of deflection ($\alpha 1 + \alpha 2$)	PESO Weight (Kg)
	ALLUNGAMENTO Stretch	COMPRESSIONE Compression			
32 x 95	6	10	9	15°	3,1
40 x 95	6	10	9	15°	3,7
50 x 105	7	10	10	15°	4,6
65 x 115	8	13	12	15°	5,3
80 x 130	18	15	12	15°	7,0
100 x 135	18	19	13	15°	7,6
125 x 170	18	19	13	15°	9,9
150 x 180	16	19	14	15°	12,4
200 x 205	16	20	22	15°	17,7
250 x 240	16	28	22	15°	24,0
300 x 260	16	28	22	15°	31,0

Tabella di correlazione pressione / temperatura

Relating pressure / temperature

Temperatura di esercizio Working temperature	≤ 80 °C	85 °C	90 °C	95 °C	100 °C	105 °C	110 °C
Pressione max esercizio Max working pressure	16 bar 230 PSI	10 bar 145 PSI	9 bar 130 PSI	8 bar 115 PSI	7 bar 100 PSI	6 bar 90 PSI	5,5 bar 80 PSI

Codici di ordinazione

Purchase article numbers

Giunto compensatore
Expansion joint

ARZO 0740 (DN) 000



Datenblatt - Kompensator Art. 0740 - PN 16

Pressione nom.		PN 2,5					PN 6					PN 10					PN 16					PN 25									
Nominal pressure		NP 2,5					NP 6					NP 10					NP 16					NP 25									
Press. di eserc.		Solo per comparazione For comparison only					I = 2,5 atm. II = 2 atm.					I = 6 atm. II = 5 atm.					I = 10 atm. II = 8 atm.					I = 16 atm. II = 13 atm. III = 10 atm.					I = 25 atm. II = 20 atm. III = 16 atm.				
Working pressure							4 atm.					10 atm.					16 atm.					25 atm.					40 atm.				
Test pressure		60 P.S.I.					150 P.S.I.					230 P.S.I.					350 P.S.I.					600 P.S.I.									
DN	ND	D.I. 1882					UNI 2234					UNI 2235					UNI 2236					UNI 2237					UNI 2241				
		Diametro flangia Flange diameter		FORI			Diametro flangia Flange diameter		FORI			Diametro flangia Flange diameter		FORI			Diametro flangia Flange diameter		FORI			Diametro flangia Flange diameter		FORI			Diametro flangia Flange diameter		FORI		
				HOLES					HOLES					HOLES					HOLES					HOLES							
		Numero	Diametro	Diametro	Mezzeria	Bolt circle	Numero	Diametro	Diametro	Mezzeria	Bolt circle	Numero	Diametro	Diametro	Mezzeria	Bolt circle	Numero	Diametro	Diametro	Mezzeria	Bolt circle	Numero	Diametro	Diametro	Mezzeria	Bolt circle	Numero	Diametro	Diametro	Mezzeria	Bolt circle
mm.	inch.																														
15	½	80	4	12	60	80	4	12	55	80	4	12	55	95	4	14	65	95	4	14	65	95	4	14	65	95	4	14	65		
20	¾	95	4	14	70	90	4	12	65	90	4	12	65	105	4	14	75	105	4	14	75	105	4	14	75	105	4	14	75		
25	1	110	4	14	80	100	4	12	75	100	4	12	75	115	4	14	85	115	4	14	85	115	4	14	85	115	4	14	85		
32	1¼	120	4	14	90	120	4	14	90	120	4	14	90	140	4	18	100	140	4	18	100	140	4	18	100	140	4	18	100		
40	1½	140	4	15	110	130	4	14	100	130	4	14	100	150	4	18	110	150	4	18	110	150	4	18	110	150	4	18	110		
50	2	160	4	18	125	140	4	14	110	140	4	14	110	165	4	18	125	165	4	18	125	165	4	18	125	165	4	18	125		
65	2½	185	4	18	145	160	4	14	130	160	4	14	130	185	4	18	145	185	4	18	145	185	4	18	145	185	4	18	145		
80	3	200	4	18	160	190	4	18	150	190	4	18	150	200	4	18	160	200	8	18	160	200	8	18	160	200	8	18	160		
100	4	230	4	22	180	210	4	18	170	210	4	18	170	220	8	18	180	220	8	18	180	235	8	22	190	235	8	22	190		
125	5	260	4	22	210	240	8	18	200	240	8	18	200	250	8	18	210	250	8	18	210	270	8	25	220	270	8	25	220		
150	6	290	6	22	240	265	8	18	225	265	8	18	225	285	8	22	240	285	8	22	240	300	8	25	250	300	8	25	250		
(175)	7	320	6	22	270	295	8	18	255	295	8	18	255	315	8	22	270	315	8	22	270	330	12	25	280	330	12	25	280		
200	8	350	6	22	300	320	8	18	280	320	8	18	280	340	8	22	295	340	12	22	295	360	12	25	310	360	12	25	310		
250	10	400	8	22	350	375	12	18	335	375	12	18	335	395	12	22	350	395	12	22	350	425	12	30	370	425	12	30	370		
300	12	450	8	22	400	440	12	22	395	440	12	22	395	445	12	22	400	445	12	22	400	460	12	25	410	460	12	25	410		
350	14	520	10	25	465	490	12	22	445	490	12	22	445	505	16	22	460	505	16	22	460	520	16	25	470	520	16	25	470		
400	16	575	10	25	520	540	16	22	495	540	16	22	495	565	16	25	515	565	16	25	515	580	16	30	525	580	16	30	525		
(450)	18	630	12	25	570	595	16	22	550	595	16	22	550	615	20	25	565	615	20	25	565	640	20	30	585	640	20	30	585		
500	20	680	12	25	625	645	20	22	600	645	20	22	600	670	20	25	620	670	20	25	620	715	20	33	650	715	20	33	650		
600	24	790	16	28	725	755	20	25	705	755	20	25	705	780	20	30	725	780	20	30	725	840	20	36	770	840	20	36	770		
700	28	900	18	28	830	860	24	25	810	860	24	25	810	895	24	30	840	895	24	30	840	910	24	36	840	910	24	36	840		
800	32	1020	20	32	940	975	24	30	920	975	24	30	920	1015	24	33	950	1015	24	33	950	1025	24	39	950	1025	24	39	950		
900	36	1120	22	32	1040	1075	24	30	1020	1075	24	30	1020	1115	28	33	1050	1115	28	33	1050	1125	28	39	1050	1125	28	39	1050		
1000	40	1220	24	32	1140	1175	28	30	1120	1175	28	30	1120	1230	28	36	1160	1230	28	36	1160	1255	28	42	1170	1255	28	42	1170		
1200	48	1420	28	32	1340	1375	32	30	1320	1405	32	33	1340	1455	32	39	1380	1455	32	39	1380	1485	32	48	1390	1485	32	48	1390		
1400	56	1620	32	32	1540	1575	36	30	1520	1630	36	36	1560	1675	36	42	1590	1675	36	42	1590	1685	36	48	1590	1685	36	48	1590		
1600	64	1820	36	32	1740	1790	40	30	1730	1830	40	36	1760	1915	40	48	1820	1915	40	48	1820	1930	40	56	1820	1930	40	56	1820		
1800	72	2020	40	32	1940	1990	44	30	1930	2045	44	39	1970	2115	44	48	2020	2115	44	48	2020	2130	44	56	2020	2130	44	56	2020		
2000	80	2220	44	32	2140	2190	48	30	2130	2265	48	42	2180	2325	48	48	2230	2325	48	48	2230	2345	48	62	2230	2345	48	62	2230		