



ANNIVERSARY  
1953 - 2018



**Battioni®**  
**Pagani**

*Setting the pace since 1953*

**Technical Catalogue**  
**Catálogo Técnico**  
**Technischer Katalog**

# SWIVEL CAST IRON PIPE



[www.bapag.it](http://www.bapag.it)

rev. 1 del 26/06/2019

# SWIVEL CAST IRON PIPE WITH FLANGE Ø 3" - 4"

GETTO GIREVOLE FLANGIATO  
REGNER MIT FLANSCH

HYDRAULIC SWIVEL ADJUSTABLE



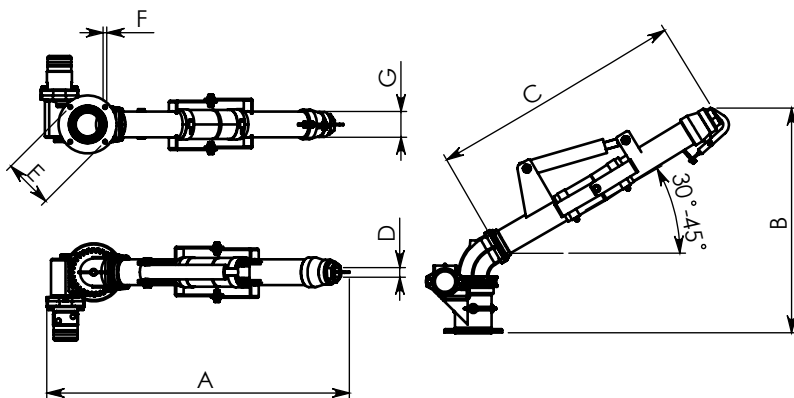
NOMINAL VALUES HYDRAULIC CYLINDER:  
- RANGE OIL TEMPERATURE - 20°C + 80°C  
- WORKING PRESSURE HYDRAULIC 90÷180 BAR

## FEATURES

- HIGH RESISTANCE SPHEROIDAL CAST-IRON
- SUPPLIED WITH 1 O-RINGS FOR COUPLING
- EASY GREASING
- ROTATION OF 360°
- BREAK-SEWAGE
- GALVANIZED PIPE
- VERSION: MANUAL SWIVEL  
HYDRAULIC SWIVEL  
HYDRAULIC SWIVEL ADJUSTABLE
- HYDRAULIC MOTOR STANDARD

## CARATTERISTICHE

- GHISA SFEROIDALE AD ALTA RESISTENZA
- FORNITURA CON 1 OR PER ACCOPPIAMENTO
- INGRASSAGGIO AGEVOLE
- ROTAZIONE DI 360°
- FRANGITTO DI SERIE
- TUBO ZINCATO
- VERSIONI: MANUALE  
IDRAULICO  
IDRAULICO REGOLABILE IN ALTEZZA
- MOTORE IDRAULICO STANDARD



## EIGENSCHAFTEN

- HOCH WIDERSTANDSFÄHIGES SPHÄROLITISCHES GUSSEISEN
- GELIEFERT MIT 1 O-RING FÜR KOPPLUNG
- BEQUEMES SCHMIEREN
- DREHUNG UM 360°
- WASSERHAHNAUFSATZ SERIENMÄSSIG
- VERZINKTE LEITUNG
- AUSFÜHRUNGEN: MANUELL  
HYDRAULISCH  
HYDRAULISCH HÖHENVERSTELLBAR
- HYDRAULIKMOTOREN ALS SERIE

## DIMENSION MANUAL SWIVEL

| CODE       | Ø  | A   | B   | C   | D     | E   | F  | G     | Kg   | Article |
|------------|----|-----|-----|-----|-------|-----|----|-------|------|---------|
| 6100300012 | 3" | 985 | 726 | 890 | 25-34 | 170 | 13 | 2"1/2 | 25,5 | 209/D   |
| 6100300013 | 4" | 985 | 726 | 890 | 34    | 170 | 13 | 3"    | 28,5 | 209/E   |

## DIMENSION HYDRAULIC SWIVEL

| CODE       | Ø  | A   | B   | C   | D     | E   | F  | G     | Kg   | Article |
|------------|----|-----|-----|-----|-------|-----|----|-------|------|---------|
| 6100300026 | 3" | 971 | 726 | 890 | 25-34 | 170 | 13 | 2"1/2 | 25,5 | 210/F   |
| 6100300027 | 4" | 971 | 726 | 890 | 34    | 170 | 13 | 3"    | 28,5 | 210/G   |

## DIMENSION HYDRAULIC SWIVEL ADJUSTABLE

| CODE       | Ø  | A   | B   | C   | D     | E   | F  | G     | Kg | Article |
|------------|----|-----|-----|-----|-------|-----|----|-------|----|---------|
| 6100300028 | 3" | 971 | 765 | 890 | 25-34 | 170 | 13 | 2"1/2 | 28 | 211/F   |
| 6100300029 | 4" | 971 | 765 | 890 | 34    | 170 | 13 | 3"    | 31 | 211/G   |



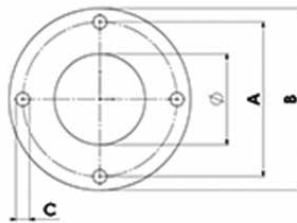
HYDRAULIC SWIVEL



MANUAL SWIVEL



|           | NOZZLE DIAMETER (mm) | PRESSURE (bar) | CAPACITY (l/min) | JET LENGTH 30° (m) | JET LENGTH 45° (m) |
|-----------|----------------------|----------------|------------------|--------------------|--------------------|
| SWIVEL 3" | 25-34                | 5              | 1600             | 56                 | 65                 |
| SWIVEL 3" | 25-34                | 6              | 1750             | 59                 | 69                 |
| SWIVEL 3" | 25-34                | 7              | 1900             | 62                 | 72                 |
| SWIVEL 3" | 25-34                | 8              | 2020             | 65                 | 75                 |
| SWIVEL 4" | 34                   | 5              | 1800             | 58                 | 67                 |
| SWIVEL 4" | 34                   | 6              | 1960             | 61                 | 71                 |
| SWIVEL 4" | 34                   | 7              | 2100             | 64                 | 74                 |
| SWIVEL 4" | 34                   | 8              | 2260             | 67                 | 77                 |



| CODE       | Ø   | A   | B   | C  | N. Holes | Thickness | Kg  | Article |
|------------|-----|-----|-----|----|----------|-----------|-----|---------|
| 5010401006 | 100 | 170 | 200 | 13 | 4        | 12        | 1,4 | 2003/E  |



**RANGE OIL TEMPERATURE -30° c +60° C**  
**MAX WORKING PRESSURE HYDRAULIC MOTOR 165 bar (2475 psi)**  
**PRESSURE APPLICAT ION 80 bar**  
**MAX OIL CAPACITY 60 l/min.**

TEMPERATURA AMMISSIBILE DELL'OLIO -30° c +60° C  
PRESSIONE MAX MOTORE IDRAULICO 165 bar CONTINUA (2475 psi)  
PRESSIONE APPLICAZIONE 80 bar  
PORTATA MAX OLIO 60 l/min. CONTINUA

| CODE       | Model            | Hydraulic Swivel Joint RPM | Kg  | Article |
|------------|------------------|----------------------------|-----|---------|
| 5020400011 | HYDRAULIC SWIVEL | 7                          | 5.9 | 2601    |

ULÄSSIGE ÖLTEMPERATUR -30° c +60° C  
MAX DRUCK DES HYDRAULIKES MOTORS 165 bar DAUERND (2475 psi)  
ANWENDUNG DRUCK 80 bar  
MAX DURCHFLOßMENGE ÖL 60 l/min. DAUERND

# HD SWIVEL CAST IRON PIPE WITH FLANGE Ø 4" - 5"

GETTO GIREVOLE FLANGIATO HD  
REGNER MIT FLANSCH HD

HYDRAULIC SWIVEL ADJUSTABLE



NOMINAL VALUES HYDRAULIC CYLINDER:  
- RANGE OIL TEMPERATURE - 20°C + 80°C  
- WORKING PRESSURE HYDRAULIC 90=180 BAR

## FEATURES

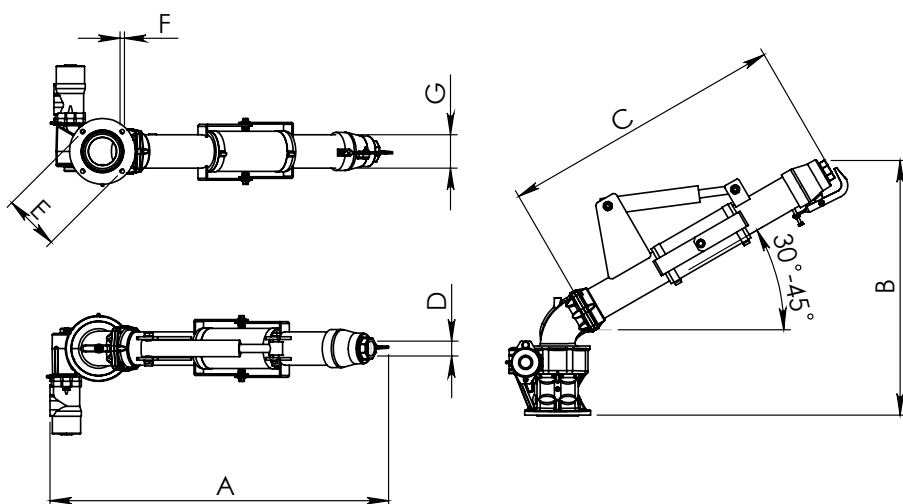
- HIGH RESISTANCE SPHEROIDAL CAST-IRON
- SUPPLIED WITH 1 O-RINGS FOR COUPLING
- EASY GREASING
- ROTATION OF 360°
- BREAK-SEWAGE
- GALVANIZED PIPE
- HYDRAULIC MOTOR STANDARD
- COVERED SPROCKET
- GUIDE WITH TWO ROUNDS OF BALLS

## CARATTERISTICHE

- GHISA SFEROIDALE AD ALTA RESISTENZA
- FORNITURA CON 1 OR PER ACCOPPIAMENTO
- INGRASSAGGIO AGEVOLE
- ROTAZIONE DI 360°
- FRANGIGETTO DI SERIE
- TUBO ZINCATO
- MOTORE IDRAULICO STANDARD
- CORONA DENTATA COPERTA
- GUIDA CON DUE GIRI DI SFERE

## EIGENSCHAFTEN

- HOCH WIDERSTANDSFÄHIGES SPHÄROLITISCHES GUSSEISEN
- GELIEFERT MIT 1 O-RING FÜR KOPPLUNG
- BEQUEMES SCHMIEREN
- DREHUNG UM 360°
- WASSERHAHNAUFSATZ SERIENMÄSSIG
- VERZINKTE LEITUNG
- HYDRAULIKMOTOREN ALS SERIE
- VERDECKTES KETTENRAD
- FÜHRUNG MIT ZWEI RUNDEN



## DIMENSION HYDRAULIC SWIVEL - HD

| CODE       | Ø  | A    | B   | C   | D  | E   | F  | G      | Kg   | Article |
|------------|----|------|-----|-----|----|-----|----|--------|------|---------|
| 6100300031 | 4" | 1030 | 775 | 860 | 34 | 170 | 13 | 3"     | 45   | 210/K   |
| 6100300030 | 5" | 1030 | 775 | 860 | 45 | 170 | 13 | 3" 1/2 | 47,5 | 210/L   |

## DIMENSION HYDRAULIC SWIVEL ADJUSTABLE

| CODE       | Ø  | A    | B   | C   | D  | E   | F  | G      | Kg   | Article |
|------------|----|------|-----|-----|----|-----|----|--------|------|---------|
| 6100300036 | 4" | 1030 | 775 | 860 | 34 | 170 | 13 | 3"     | 45   | 211/K   |
| 6100300037 | 5" | 1030 | 775 | 860 | 45 | 170 | 13 | 3" 1/2 | 47,5 | 211/L   |



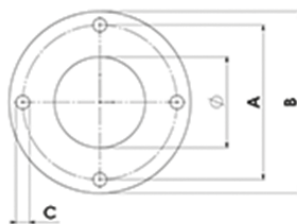
HYDRAULIC SWIVEL



HYDRAULIC SWIVEL ADJUSTABLE



|              | NOZZLE DIAMETER (mm) | PRESSURE (bar) | CAPACITY (l/min) | JET LENGTH 30° (m) |
|--------------|----------------------|----------------|------------------|--------------------|
| SWIVEL 4" HD | 34                   | 5              | 1800             | 58                 |
| SWIVEL 4" HD | 34                   | 6              | 1960             | 61                 |
| SWIVEL 4" HD | 34                   | 7              | 2100             | 64                 |
| SWIVEL 4" HD | 34                   | 8              | 2260             | 67                 |
| SWIVEL 5" HD | 45                   | 5              | 2943             | 64                 |
| SWIVEL 5" HD | 45                   | 6              | 3224             | 70                 |
| SWIVEL 5" HD | 45                   | 7              | 3482             | 76                 |
| SWIVEL 5" HD | 45                   | 8              | 3723             | 81                 |



| CODE       | Ø   | A   | B   | C  | N. Holes | Thickness | Kg  | Article |
|------------|-----|-----|-----|----|----------|-----------|-----|---------|
| 5010401006 | 100 | 170 | 200 | 13 | 4        | 12        | 1,4 | 2003/E  |



**RANGE OIL TEMPERATURE -30° c +60° C**  
**MAX WORKING PRESSURE HYDRAULIC MOTOR 165 bar (2475 psi)**  
**PRESSURE APPLICATION 80 bar**  
**MAX OIL CAPACITY 60 l/min.**

TEMPERATURA AMMISSIBILE DELL'OLIO -30° c +60° C  
 PRESSIONE MAX MOTORE IDRAULICO 165 bar CONTINUA (2475 psi)  
 PRESSIONE APPLICAZIONE 80 bar  
 PORTATA MAX OLIO 60 l/min. CONTINUA

| CODE       | Model            | Hydraulic Swivel Joint RPM | Kg  | Article |
|------------|------------------|----------------------------|-----|---------|
| 5020400011 | HYDRAULIC SWIVEL | 7                          | 5.9 | 2601    |

ULÄSSIGE ÖLTEMPERATUR -30° c +60° C  
 MAX DRUCK DES HYDRAULIKES MOTORS 165 bar DAUERND (2475 psi)  
 ANWENDUNG DRUCK 80 bar  
 MAX DURCHFLOßMENGE ÖL 60 l/min. DAUERND



**Battioni®**  
**Pagani**

*Setting the pace since 1953*



**Battioni Pagani Pompe S.p.A.**  
Via Ferrari N. 2  
43058 Sorbolo Mezzani (PR) - Italy  
Ph. +39 0521 663203

[www.bapag.it](http://www.bapag.it)  
[info@bapag.it](mailto:info@bapag.it)

