

# KPS

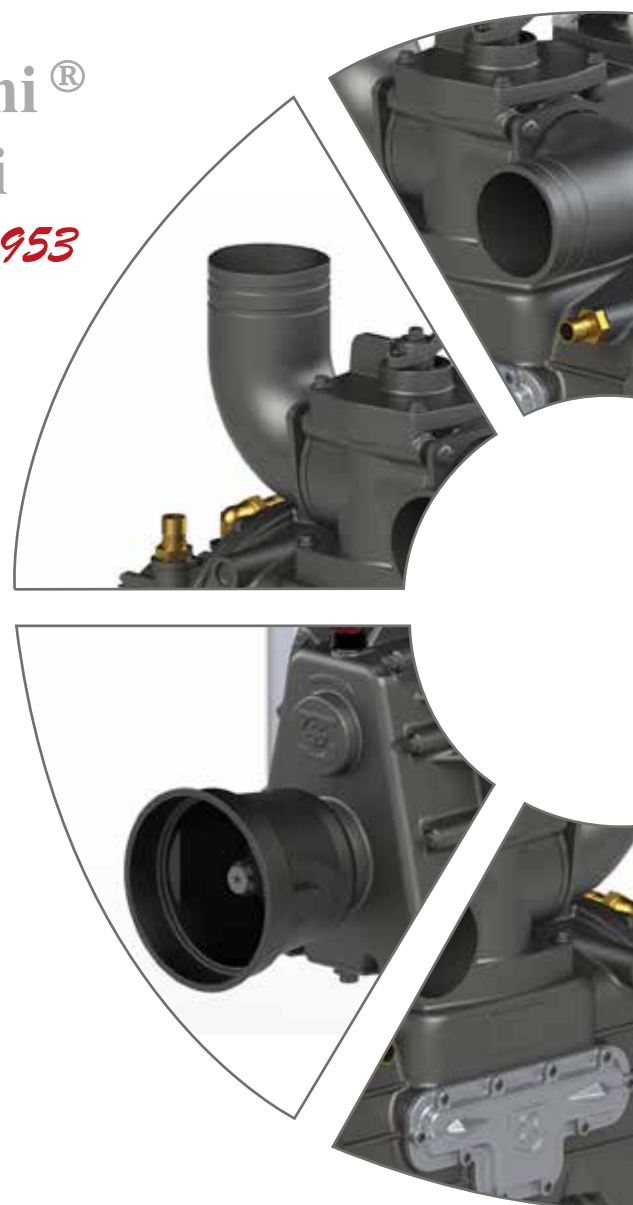
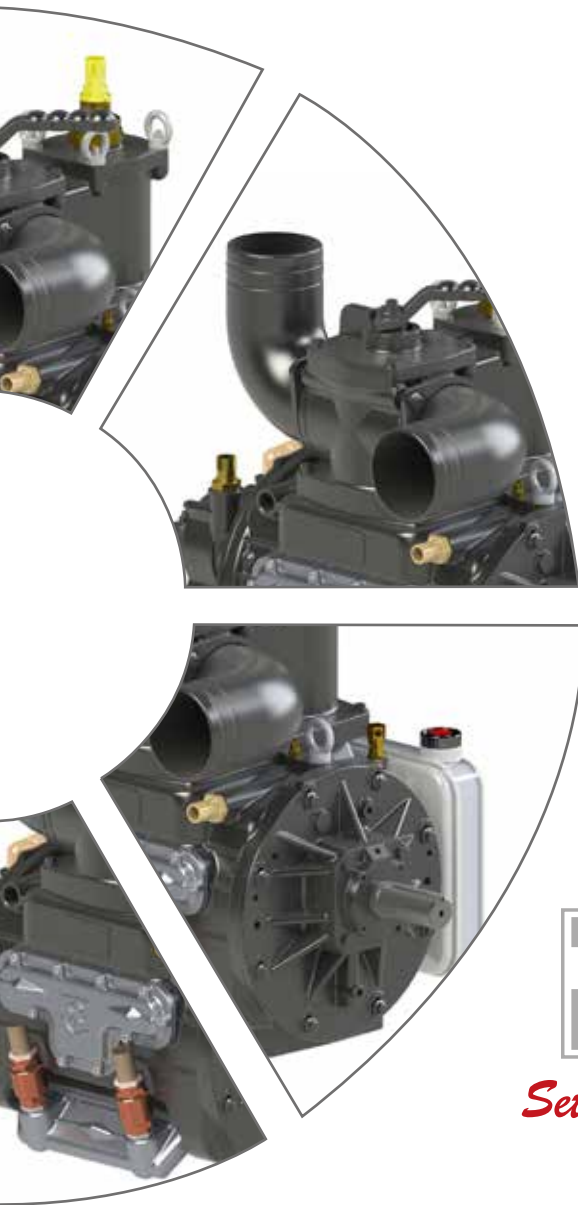
490 - 550 - 670

Technical catalogue  
Catalogo tecnico  
Technischer Katalog



Battioni®  
Pagani

*Setting the pace since 1953*

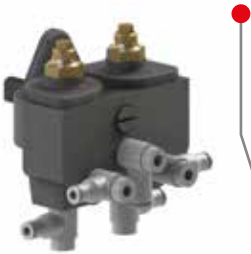




**Depression valve on request**  
Valvola di regolazione vuoto a richiesta  
Unterdruckventil auf anfrage

**Selector vacuum - pressure**  
Selettore Vuoto - Pressione  
Wähler von Vakuum/Druck

**Automatic lubrication pump as standard**  
Pompa di lubrificazione automatica di serie  
Automatische Schmierung als Serie



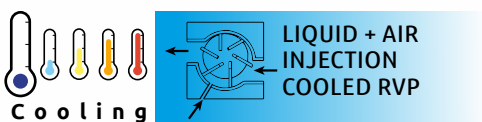
**Integrated cooling pump as standard**  
Pompa di raffreddamento integrato di serie  
Integrierte Kühlpumpe

**Painting RAL 7021, resistant to 240 hours corrosion protection – salt- and fog/haze tested**  
Verniciatura RAL 7021, resistente a 240 ore di esposizione in nebbia salina  
Lackierung RAL 7021, beständig gegen 240 Stunden Salz- und Nebeltest

**High wearing resistance thanks to cast-iron with high hardness**  
Elevata resistenza ad usura grazie a ghisa ad alta durezza  
Hohe Festigkeit zu Abnutzung für Gußeisen mit hohe Härte

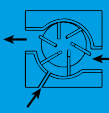
**Air injection cooling on request**  
Iniezione aria di raffreddamento a richiesta  
Injektion der Luftkühlung auf anfrage

**Long Life Blades as standard**  
Palette Long Life di serie  
Long Life Schaufeln als serie



**NEW**

**KPS**  
490 - 550 - 670



**Integrated Final air filter, effective in both vacuum and pressure use**

Filtro aria finale integrato, efficace sia in vuoto che in pressione  
Integriert Endluftfilter, wirksam in Vakuum und auch in Druck

**Watercooling in the body**

Raffreddamento ad acqua su corpo  
Wasserkühlung im Körper

**External Side oil tank as standard**

Serbatoio olio laterale di serie  
Externe Seitenöltank als Serie

**Blades inspection hole**

Foro ispezione palette  
Bohrung für Lamellen Prüfung



**Rotor with steel pins fixed on it to help maintenance operations (KPS 550 - 670)**

Rotore con perni in acciaio riportati per facilitare interventi di manutenzione (KPS 550 - 670)

Rotor mit stahl Stifte eingebaut auf Rotor für leichte Unterhaltung (KPS 550 - 670)

**CPS - CRASH PROTECTION SYSTEM**

**Sliding Flanges to avoid breakages of the body and rotor during vanes crashes**

Flange con asole di scorrimento in caso di ingresso materiale o rottura palette

Flansche mit Slotsblättern falls Materialschmierung oder Palettenbruch

**VERSIONS**



KPS - M/MA



KPS - P



KPS - D

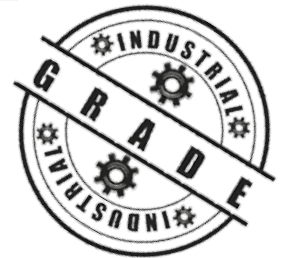


KPS - H



KPS - K/KA

Liquid + Air  
Injection cooled RVP



*Water-cooling and air injection cooling*



## KPS

The KPS pump series features liquid cooled housing enabling continuous operation in vacuum and in pressure modes.

The KPS pump series is for applications where long time continuous non-stop operation is required (i.e. oil fields, combined vacuum trucks, industrial applications).

The KPS series is the ideal choice for professional users and contractors.



## STANDARD FEATURES

- Automatic lubrication (2,3 or 4 points), cooling pump, 4-ways valve, Poppet Check valve, Side outlets with revolving elbows, Long Life Blades, Crash protection System
- Available hoses connections: Ø 76 mm (3") / Ø 80 mm / Ø 100 mm (4") / Ø 120 mm

## VERSIONS



**Version M-MA**  
Splined shaft  
1"3/8 - Z6 ISO 500



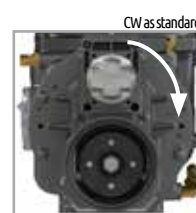
**Version P**  
Smooth Cylindrical shaft,  
Ø 32, lenght 63 mm  
Parallel key UNI 6604  
KPS 490  
Smooth Cylindrical shaft,  
Ø 40, lenght 90 mm  
Parallel key UNI 6604  
KPS 550 - 670



**Version D**  
Splined shaft  
1"3/8 - Z6 ISO 500



**Version H**  
Group 4  
86,56 cc/rev - Pmax 280 bar  
- In G 1"1/4 - Out G 1" 1/2



**Version K / KA**  
Splined shaft  
1"3/8 - Z6 ISO 500  
Support Gr. 2 or Gr. 3  
Hydraulic pump on request  
KPS 550 - 670

## TECHNICAL DATA

	Geometrical capacity			Max rpm			Max abs pressure Bar/PSI	Max vacuum % (inHg)	Max continuous vacuum % (inHg)	Power at max vacuum kW (HP)	Weight kg				
	m³/h	l/min	cfm	M-K	MA-KA	P/D/H					M-MA	P	D	H	K-KA
KPS 490	811	13520	477	600	1000	1400	2.5 (36)	95% (28,5")	95% (28,5")	25 (33,5)	221	205	205	242	-
KPS 550	916	15270	539	600	1000	1400	2.5 (36)	95% (28,5")	95% (28,5")	33 (44,2)	236	216	216	253	226
KPS 670	1117	18620	657	600	1000	1400	2.5 (36)	95% (28,5")	95% (28,5")	45 (60,3)	265	245	245	282	255

## OPTIONALS



**Hydraulic Changeover**  
Code 6080200315



**Hydraulic Revolving Changeover**  
Code 5090000108



**Pneumatic Revolving Changeover**  
Cod. 6080200306



**Pneumatic Revolving Changeover - 3 Positions**  
Code 6080200307



**Battioni Pagani Vacuum Pump Oil 5 lt.**  
Code 5070200100



**Battioni Pagani Flushing Fluid 5 lt.**  
Code 5070200102



**Flushing Kit**  
Code 6080200325



**Kit Overpressure 2"**  
Code 6080200389



**Air injection cooling kit**



**Customized Painting**



# ACCESSORIES



**Vacuum Relief Valve  
1"1/2**  
Code 5100200012  
Setting range:  
-0,3 bar / -0,8 bar  
Working temperature:  
-20°C / +90°C  
Thread: 1"1/2  
Weight: 0,65 kg



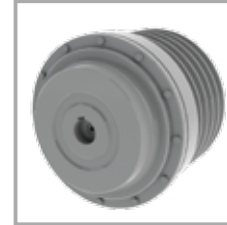
**Overpressure Safety  
Valve - 2"**  
Code 5100200011  
Setting range:  
+0,3 bar / +1,5 bar  
Working temperature:  
-20°C / +90°C  
Thread: 2"  
Weight: 1,2 kg



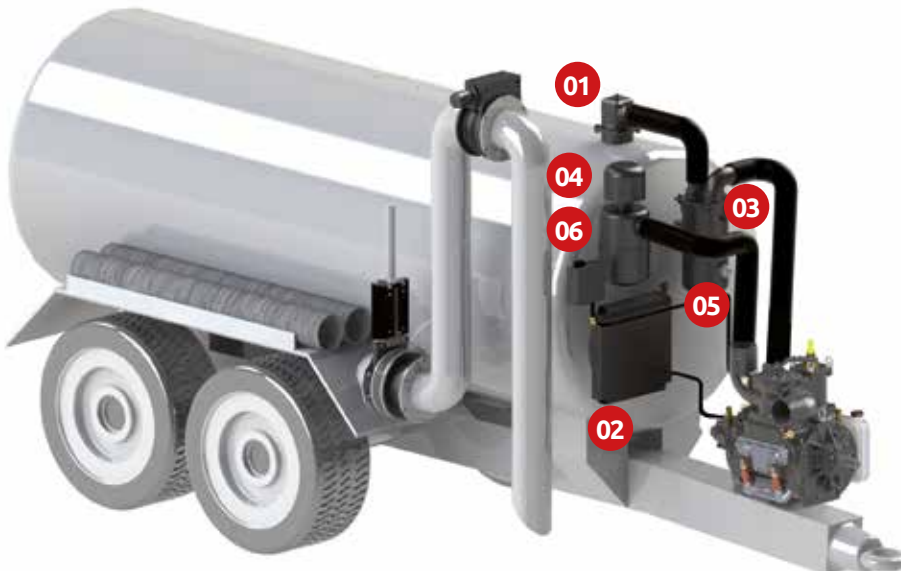
**Primary Overflow Valve –  
Two Balls**  
Code 6100200030 - Ø76  
Code 6100200025 - Ø80  
Code 6100200026 - Ø100  
Iron ring to be welded  
Weight: 13,9/14,0 kg



**Primary Overflow Valve –  
One SS Ball**  
Code 6100200027 - Ø80 SS  
Code 6100200028 - Ø100 SS  
Ball material: AISI 316  
Iron ring to be welded  
Weight: 13,8/13,9 kg



**Pulley with  
pneumatic  
clutch**  
Code  
6080200034  
KPS 550 - 670



Tank with side pipe



**Filter - Silencer**  
Code 5090000026  
KPS-Ø 100  
Code 5090000025  
KPS-Ø 80  
Weight: 13 kg



**Rain Cap**  
Code 5090000062  
KPS-Ø 100  
Code 5090000061  
KPS-Ø 80  
Weight: 0,4 kg



**Pre - filter**  
Code 5090000047  
KPS-Ø 100  
Code 5090000046  
KPS-Ø 80  
For Filter/silencer only  
Weight: 1,1 kg

Liquid + Air  
Injection cooled RVP



**Cyclon valve - 1100**  
Code 6100200033 - Ø100  
Housing: Galvanized Mild  
Steel  
Cover: aluminum  
Weight: 35 kg



**Cyclon valve - 1100  
SS**  
Code 6100200034  
- Ø100  
Housing: AISI 304  
Cover: aluminum  
Weight: 35 kg



**Secondary Valve - Two  
Balls**  
Code 6100200035 - Ø76  
Code 6100200021 - Ø80  
Code 6100200022 - Ø100  
Weight: 35,6 kg



**Discharge valve**  
Code 5040200016 - 1" 1/4  
To be fitted on Cyclon valves  
Code 5040200014 - 1"  
To be fitted on  
Secondary valve



**Gauge - Ø 80 mm  
Axial Connection**  
Code 5101700007  
To be fitted on  
Secondary valve



**Air-Water Cooled with  
Thermostat**  
Code 5090000081 - 12V  
Code 5090000082 - 24V  
Weight: 17,8 kg





Battioni®  
Pagani

*Setting the pace since 1953*



**Battioni Pagani Pompe S.p.A.**

Via Enzo Ferrari, 2  
43058 Sorbolo (PR) - Italy

Ph. +39 0521 663203

Fax +39 0521 663206



[www.bapag.it](http://www.bapag.it)  
[info@bapag.it](mailto:info@bapag.it)

